



POLWARTH

SHEEP BREEDERS ASSOCIATION OF AUSTRALIA

The Polwarth Round-up December 2018

Reflection on 2018

The vagaries of Australia's weather conditions has seen some members experience prolonged periods of dry weather during 2018. Crops have failed or were not put in the first place, members have been forced to buy in feed and then there's been the daily grind of hand feeding, checking water points and ensuring animals are not stuck in drying dams. Some members have reduced numbers to help preserve what little feed there is. Our thoughts are with you and we hope the seasons turn in your favour in 2019. Thank goodness for healthy wool and lamb markets which provide some reward for the hard work.

Welcome to new members

- Glen Oxford and Wendy Hartley at Belmore Park Polwarths, Young, NSW
- Mark and Tracy Hibble, Tamar Polwarths, Kangaroo Island, SA

Polwarths — Feature Breed at the Australian Sheep and Wool Show in 2019

We are excited to be named Feature Breed for next year's Australian Sheep and Wool Show in Bendigo to be held from 19th-21st July 2019. This coincides with the centenary year of the Polwarth Sheep Breeder's Association of Australia (1919-2019).

Firstly, we hope that as many members as possible can support the show by either showing sheep, entering fleeces or attending the show. Early in the new year, we hope to have details of a special event celebrating the centenary.

At the General Meeting held on 21st July 2018, some changes were made to classes for the 2019 Show Schedule. The changes are detailed on page 2 of the newsletter.



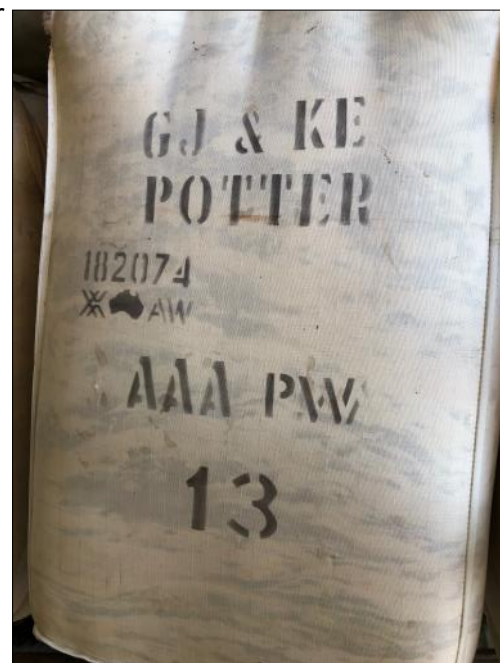
It's official - new PW code

Following the association's submission to AWEX at the end of July 2018, Polwarth wool has now been recognised with it's own breed code (PW) in the new AWEX 2019-21 Code of Practice.

During shearing in the first week of December, Fairview Polwarths (Yeo, Victoria) branded their bales with the PW code. The clip is now in the hands of brokers and will be sold when sales resume in January.

The Executive encourage feedback from members regarding your experiences with the PW code.

1. CLASSED LINE (Breed applicable) (Type for New Breed Wool)	2. BREED GROUP (Breed Code)	3. WOOL CATEGORY (Indicates for New Breed Wool)	4. PIGMENTED/MEDULLATED (Only if applicable)
Main Line (Only Breed Group) AAA*	Corned CBK	Adult Fleeces PCS	Note: Y and K can be used together in a description
Secondary Line (Only Breed Group) AA*	Fine Crossbred FX	Bales BLS	Visible Black Fibres Y
OR	Medium Crossbred MX	Wooler Fleeces WNS	Visible Medullated Fibres K
	Coarse Crossbred CX	Wooler Pieces WPCS	Run with Shading Breeds R
	Corned CD	Wooler Bales WBL	
	Polwarth PW	Lamba Pieces LMS	
		Lamba Pieces/Bales LPCS	
		Locks LKS	
		Crutchings CRT	
		Dags DAG	
CAST LINE			
Stain - Urine STN			
Colour - Heavy Unrecoverable COL			
Cott - Medium/Hand COT			
Tender - Window TDR			
Dermatitis DER			
Dropper DGY			
Overgrown/Double OG			
Skin Pieces SKN			
Brands BND			
Flydown FLY			
Plucked and Dead Piece Wool DDD			
Black BLK			



2019 Australian Sheep and Wool Show Schedule

Advanced notice on changes plus new classes



- **Change to Shearing Date for Under 1½ year Classes**
Motion moved Ken Arnold, seconded Ellis Jelbart that sheep in the under 1½ year classes be shorn on or after 1st December. Carried
- **Introduction of August Shorn Performance Class**
Motion moved Ken Arnold, seconded Maxine Walker that a Performance Class be introduced for rams over 1½ and under 2½ years, incorporating wool test results, scan results and judge appraisal. Carried
- **Introduction of March Shorn Class**
Motion moved Peter Williams, seconded Caroline Sanders that the Bare Shorn class be replaced with the introduction of March Shorn classes. This will include ewe and ram classes over 1½ years and under 2½ years. Ewes can have lamb/s at foot. Carried
- **Chief Judge** for the show will be Martin Patterson from New Zealand
More information and instructions will be forwarded to members in the new year.

‘Against all Odds’

At the end of August, Julie Dries from St George in Queensland penned a few lines:

“Have been extremely busy clearing fence lines and putting up an exclusion fence around the property of 6642 hectares. Not a cheap exercise but can’t stop the wild dogs killing the sheep and my brother (who lives next door) is a dog trapper and he can’t catch them either. I think we have just got it up in time. One sheep on the outside of the netting was killed promptly. Unlike most other farmers, I am still happy to see a few roos and a few emus being on the inside. At least it won’t be in the thousands as it usually is.”

Exclusion fence stats:

- Hinged apron 2.4m blue latch posts
- Waratah 21km
- Clipex 8km
- Waratahs JIO 4km
- Total 21km costing \$240,000 including removal of old fence, clearing, materials and construction.
- Luckily no dogs were trapped inside

Shearing of Marouga’s Polwarth mob of 700 starts next week. Marouga have been using Mt Alma rams in recent years.

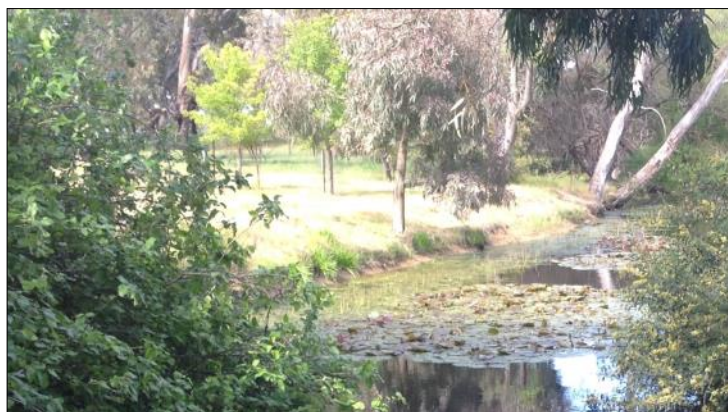


In August this year, following nearly 60 years of registration (1959-2018) with the Polwarth Association, flock number 125 Challicum Polwarths ended an era. Doug Hopkins has hung up his day to day farming boots and leased the farm out.

Doug's father started showing cocker spaniels at the Melbourne Show in the 1930's which, according to Doug, was an excuse to court his mother. Doug and his father started showing sheep and fleece in the 1950's from "Wormbete" at Winchelsea. Doug watched his father pick lambs' wool and kept the tradition going after he passed.

This year, Doug was awarded a Life Membership and Presidents Medal from the Royal Agricultural Society of Victoria (RASV). He also received a meritorious award from Ballarat Sheep Show. Doug has also helped out at many country shows including Stawell, Clunes and Beaufort, as well as Bendigo, enjoying every minute. This has included judging, serving on fleece committees and being a contestant.

Although the farm has been leased, Doug hopes to remain involved as sheep and wool have been his life. We wish Doug all the best in retirement and hope to see Doug and Judy at next year's show in Bendigo.

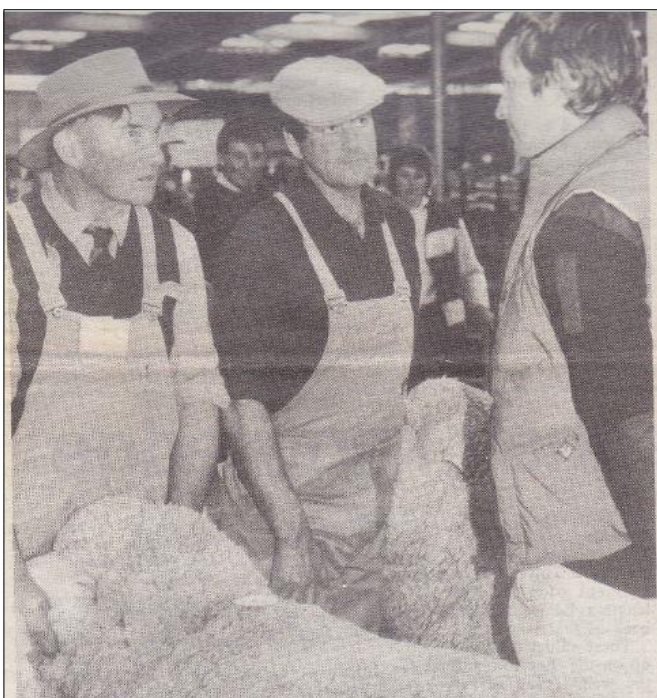


Flashbacks from Ken Arnold and Noel Littlejohn scrap books!



Polwarth ram judge, Doug Hopkins, Chailicum, Buangor, Victoria, taking a closer look at Noel Littlejohn's ram during the judging of the recent Campbell Town Sheep Show.

Page 32 — Stock and Land, Thurs., July 2, 1987



Polwarth ewe judge, Frank Youl, Barton, Campbell Town, (right) asking some relevant questions about these entries held by Charlie Wilson, Formosa manager, with Ken Arnold, Formosa stud manager.

ROCKTHORPE POLWARTHS

SELLS RAM FOR \$140,000 IN URUGUAY



The ROCKTHORPE PURE POLWARTH stud sent three rams to the Polwarth/Ideal World Conference International Show and Sale at Prado, Uruguay, where there were entries from Uruguay, Brazil, Argentina and Australia.

Under a South American judge, one Rockthorpe ram was **GRAND CHAMPION RAM** and was also judged the ram with the **BEST FLEECE** and **BEST CARCASE**. He sold at auction for a **WORLD RECORD PRICE OF 10 million pesos** or \$Aust140,000 to Francisco Bastos, Brazil, after a spirited bidding duel between Uruguayan and Brazilian interests. This ram will be used in a major artificial insemination programme on the properties of the buyer in Brazil and will follow numerous other Rockthorpe rams which have gone to South American countries.

ROCKTHORPE PURE POLWARTH rams have been sold throughout Australia plus New Zealand, Brazil, Uruguay, Romania, India and the Falkland Islands. All of these countries have returned to buy more Rockthorpe rams.

Since its foundation, Rockthorpe has always been a successful exhibitor in major sheep shows and fleece competitions. At the 1985 Campbell Town Sheep Show, Rockthorpe exhibited the grand champion ram, champion ewe, six firsts, five seconds, four thirds, and won the aggregate prize for most points.

In national fleece competitions Rockthorpe has won two Australian championships.

Rockthorpe's sale rams are bred from an elite "inner" ewe flock and this ensures that only rams from our top ewes are offered for sale. This is where our world record breaker came from and a large selection of rams is made available for clients. **A ROCKTHORPE PURE POLWARTH RAM** (there has been no Merino infusion into the Rockthorpe stud since 1923 and possibly since 1906) can transmit the true **DUAL PURPOSE POLWARTH QUALITIES** in **HEAVY CUTTING, EARLY MATURING, THRIFTY, HARDY, STRONG CONSTITUTIONED SHEEP** with **EVEN, BRIGHT WOOL OF GOOD COMMERCIAL LENGTH**.

ROCKTHORPE PURE POLWARTHS STILL PURE — STILL WINNING

Enquiries for stud and flock rams direct or through any agents.

R. E. LAWRENCE & CO, ROCKTHORPE, RSD, CRESSY, TAS. 7301
Telephone (003) 97 8292. Manager Lindsay Rigby (003) 97 8299.